

Hikvision LED Displays
Brighten every moment



www.hikvision.com
support@hikvision.com



HIKVISION

HIKVISION



Hikvision LED Displays
Brighten every moment



ABOUT HIKVISION

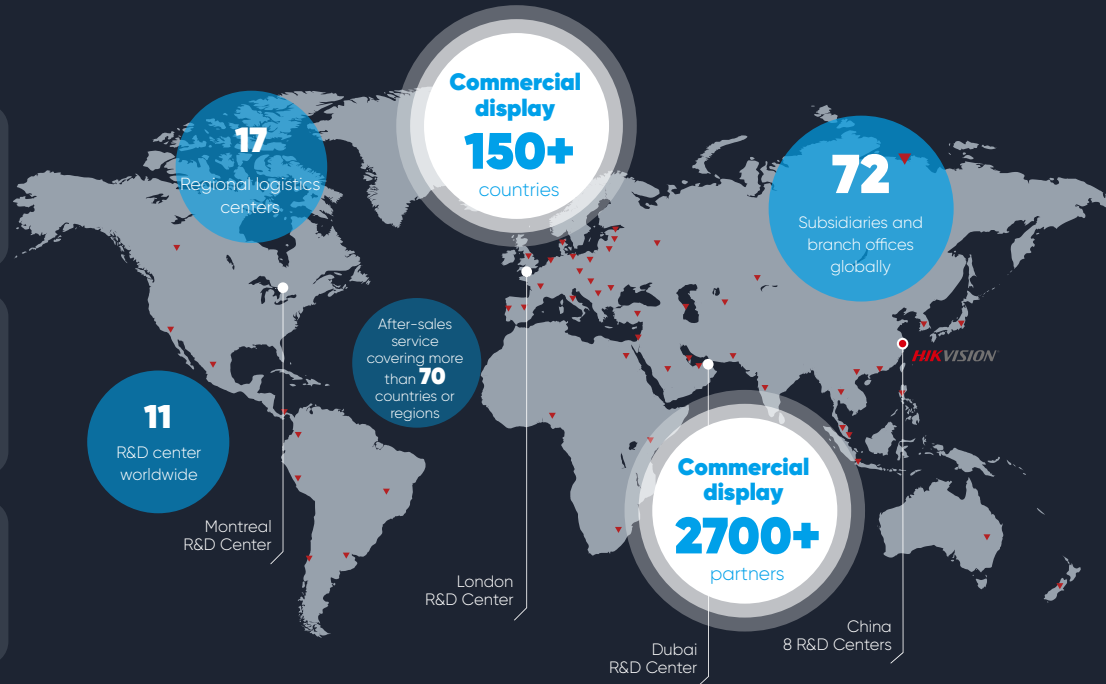
Hikvision is committed to serving various industries through its cutting-edge technologies of machine perception, artificial intelligence, and big data, leading the future of AIoT.

R&D Investment

Over **11%** annual revenue invested in R&D

Almost **1/2** R&D engineers among **58,000+** employees worldwide

7,500+ Patents



Abundant Product & Solution Offerings

We develop nearly **30,000** hardware products and more than **200** software products with leading technologies, such as:

- Video & Imaging Technology
- Multi-Dimensional Perception
- Artificial Intelligence

Product Matrix of LED Displays



Indoor LED Displays



Outdoor LED Displays



Creative LED Displays



Rental LED Displays

HIKVISION LED TECHNOLOGIES

Excellent Display Performance



HDR10 technology

High Dynamic Range 10 (HDR10) enhances display with better contrast, colors, and brightness for sharper, clearer LED images.



Image and text enhancement

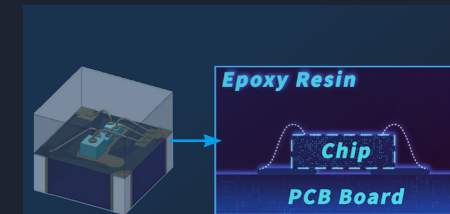
LED image enhancement and text enhancement technologies for better image gloss, transparency, and clearer details.



Grayscale multiplication technology

64x contrast ratio boost solves mosaic and vignetting, delivering seamless image transitions.

Energy-saving Technologies



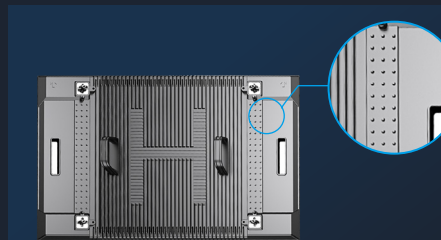
Flip chip COB

Flip-chip COB boosts luminous area, energy savings, and temperature reduction by eliminating wire-bonding step.



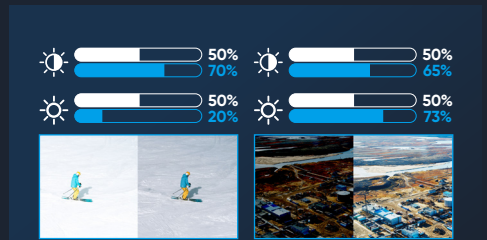
Common cathodes

Common cathode powers each RGB LED separately, enabling accurate voltage distribution and reduced power consumption.



Aluminum cabinets

Aluminium cabinets protect LED displays with excellent heat dissipation for prolonged component lifespan.



Intelligent energy-saving engine

Hikvision's intelligent energy-saving engine enhances images with pixel-level clarity and intelligent analysis for optimal display quality.

HIKVISION LED DISPLAYS MATRIX

Indoor LED displays

Advanced indoor LED displays with diverse encapsulation technologies.



ZWDH(B)

- Flip-chip COB, enhanced display effect, and better protection
- Contrast ratio up to 18,000:1, & brightness 1,000 nits
- Low power consumption



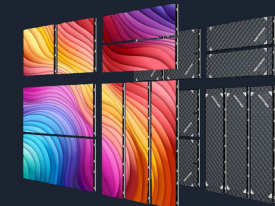
CWF

- High flatness LED with 16:9 screen ratio
- Proprietary system with functional applications



CWFH

- HOB technology enhances protection with lower dead lamp rates
- High flatness LED with 16:9 screen ratio
- Proprietary system with functional applications



CGFx

- Creative splicing with diverse sizes, suitable for retail scenarios
- Flexible rotation to ensure optimal viewing
- Supports right-angle splicing and 10° outer arc splicing with creative shapes



LED Splicing Screen

- HDMI or HDBaseT interface compatible (alternative)
- Built-in LED controller
- Plug-and-play ready
- Self splicing up to 10 screens



CSF

- Affordable excellence
- Aluminum cabinet with high flatness and great heat dissipation

Outdoor LED displays

Stand out from the crowd with high brightness, surprising energy-savings and excellent heat dissipation.



GLF/CLF

- Supports operation without air conditioning below 60° C
- Up to 50% energy saving
- Up to 10,000 nits to ensure high brightness with less brightness degradation
- Front and rear maintenance
- Protection IP67 (front) and IP66 (rear)



CLFS/CLFL

- Fine-pitch LED with great display effects
- Free splicing between large and small cabinets
- Up to 30% energy saving
- Supports operation without air conditioning below 60°C
- Up to 6,000 nits with less brightness degradation
- Protection IP66 (front and rear)



CKA

- Waterproof die cast aluminum cabinet frame with high flatness
- Minimum pixel pitch of 2.5 mm

Creative LED Displays

Revolutionize your LED display content.



LED All-in-one Display

- Flexible installation, and screen size for various scenarios
- Built-in dual system (Android and Windows), and loudspeaker
- Outstanding display and projection for effective communication
- HOB technology enhances protection with lower dead lamp rates



LED Poster Display

- Ultra thin design, flexible screen size, easy installation
- Up to 10 self-splicing screens with only HDMI cables
- Built-in controller and information display system for easy advertising
- HOB tech ensures reliable protection



Transparent LED Display

- High transparency (up to 70%) ensures good indoor lighting, suitable for advertising and retail applications
- Flexible, easy installation
- Ultra high indoor brightness – up to 5,000 nits

In-house Manufacturing

A reliable production capacity and precise quality control are always Hikvision's top priorities. In-house manufacturing allows us to maintain consistent quality standards, increase output, respond better to market demands, and improve turnaround times.

Our self-research and self-production rate of baseline products has exceeded 90%, and the monthly production ability of LED lamps exceeds 5 billion.



Solder Paste Printing



AOI - Automatic Optical Inspection



Surface Mounting



Reflow

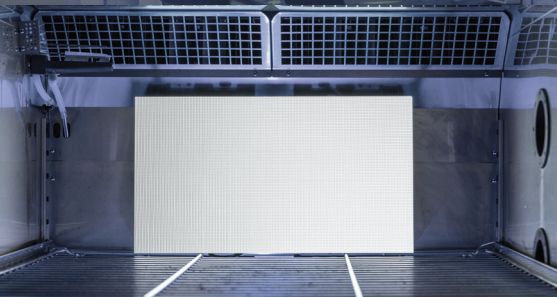


Lighting Inspection

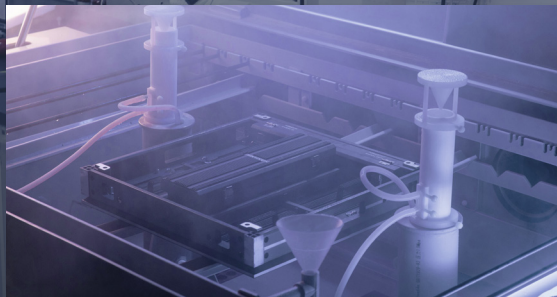


Auto-aging

Climate Test



Salt Spray Test



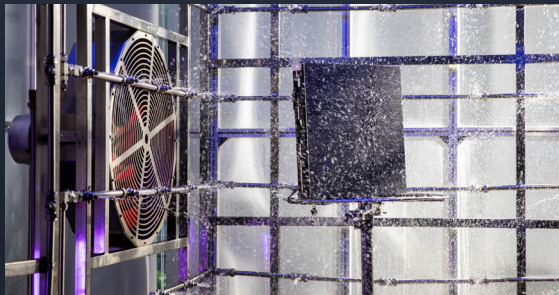
Anechoic Chamber RF Test



Dissipation Test



Water Proof Test



Packaging and Transportation Test



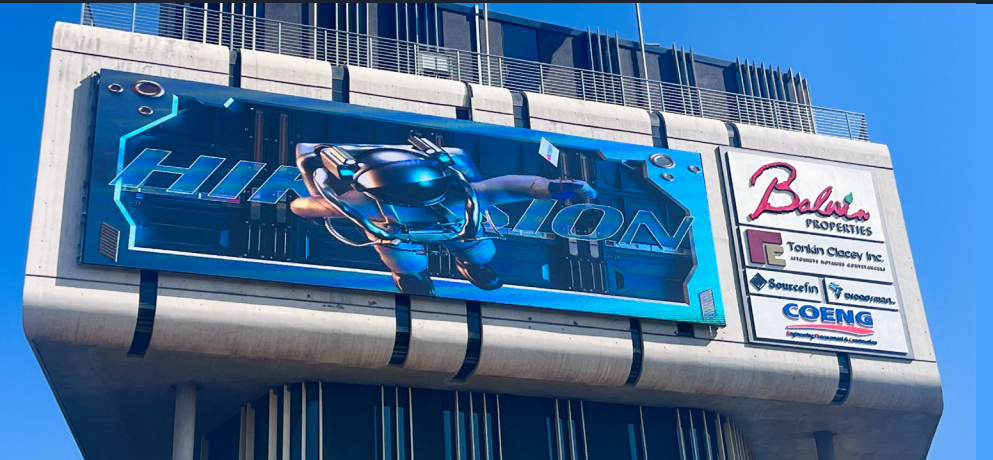
Full-circle Quality Control

LED displays often have a hard life. Many are moved frequently, used outdoors on rigs, or placed in hot, direct sunlight for hours – testing their resilience to the utmost limits. By ensuring strict quality with full-circle testing, from incoming parts to outgoing products and everything in between, Hikvision builds every LED display at the highest standards. Our aim and purpose is to truly brighten every moment.

HIKVISION®

SUCCESS STORIES

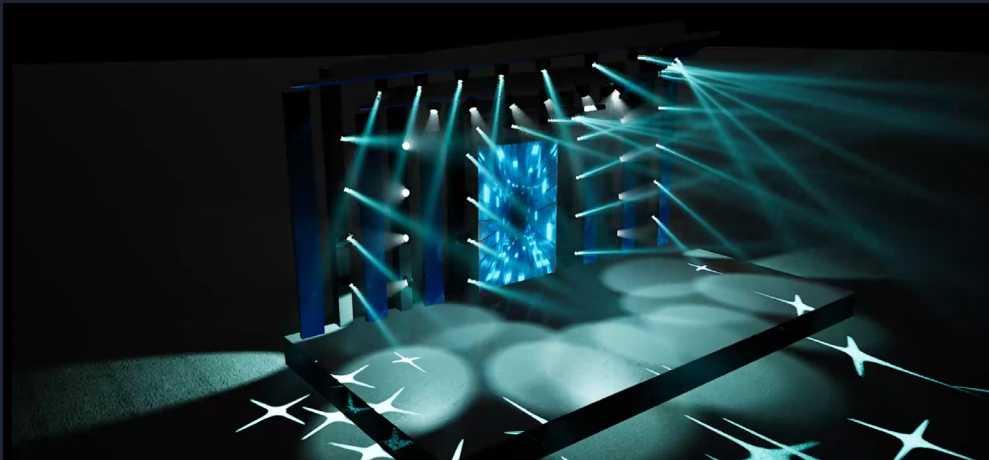
Customer: **Balwin Properties Limited**
Location: Johannesburg, South Africa
Industry: Real estate



Customer: **My Clinic Dental Centre**
Location: Al Khalidiyyah, Saudi Arabia
Industry: Healthcare



Customer: **ShowTime**
Location: São Paulo, Brazil
Industry: Entertainment & Events



Customer: **Gereja Isa Almasih Dr. Cipto**
Location: Semarang, Central Java, Indonesia
Industry: Religious organization



Customer: **Etern Laos Communication**
Location: Vientiane, Laos
Industry: Commercial



Customer: **GIGA Digital**
Location: Vietnam
Industry: Retail



Customer: **Secteo GmbH**
Location: Thale, Germany
Industry: Security



Customer: **GEMS Modern Academy**
Location: UAE
Industry: Education



Customer: **Intersport**
Location: Athens, Greece
Industry: Retail



Customer: **Jashanmal**
Location: UAE
Industry: Retail

Customer: **Empl Fahrzeugwerk GmbH**
Location: Tyrol, Austria
Industry: Manufacturing



Customer: **A broadcasting studio**
Location: São Paulo, Brazil
Industry: Broadcasting



Customer: **Piperaris Security**
Location: Cyprus
Industry: Security



Customer: **Global Entertainment Network Ltd**
Location: Qatar
Industry: Entertainment



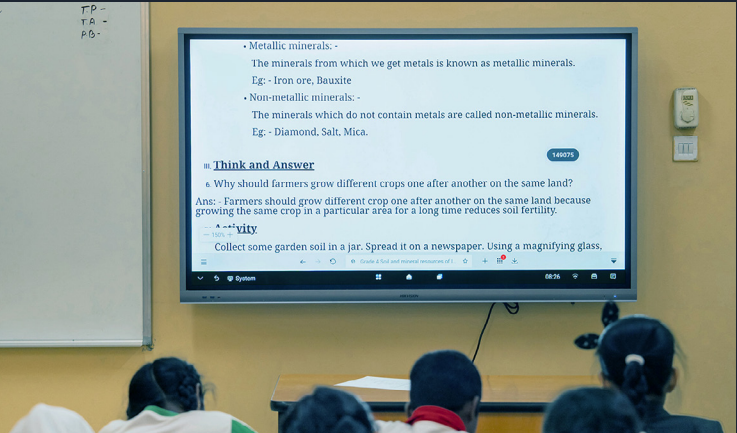
Customer: **Malta restaurant**
Location: Duhok, Iraq
Industry: Hospitality



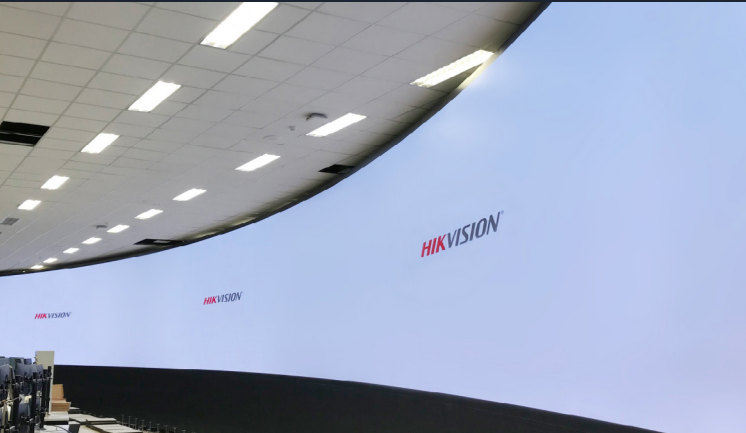
Customer: **Oman Tower Company**
Location: Salalah, Oman
Industry: Telecommunications



Customer: **ShowTime**
Location: São Paulo, Brazil
Industry: Show & Events



Customer: **East Point Indian International School, Ajman**
Location: UAE
Industry: Education



Customer: **Kazakhstan Petrochemical Industries Inc.**
Location: Kazakhstan
Industry: Energy