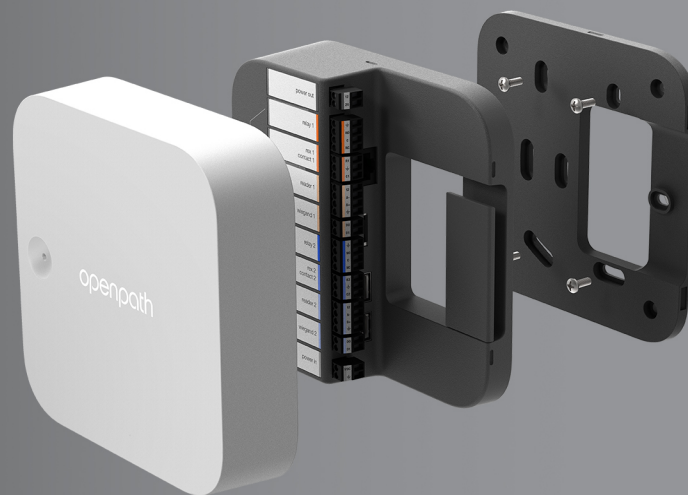


AVIGILON™

Single Door Controller

Expandable Access Control for the Modern Workplace



Some hardware may show the Openpath logo.

OP-CR-SDC

Avigilon Alta access combines sleek hardware with cloud management and an easy-to-use mobile app, enabling secure remote monitoring and management for operators and streamlined mobile access for credentialed users. The Single Door Controller is a compact access control unit (ACU) for up to two entries and two Avigilon readers. Using Power-over-Ethernet (PoE or PoE+) for power simplifies installation, making it ideal for small offices or decentralized deployments. The Controller securely makes all entry decisions and it's easily set up using the Open Admin app.



All-in-One Device

Eliminate the need for additional hardware and centralized wiring with the Single Door Controller. This compact ACU supports two readers, two doors, and associated relays and sensors, with power.



High-Performance Hardware

The Single Door Controller uses a next-generation hardware platform with faster processing speeds, more RAM and better support for our 64-bit operating system, enabling future-proof capabilities.



Simplified Wiring

With wired or wireless options and PoE for power, the Single Door Controller streamlines installation. Connect to Readers with CAT 5/6 cables and industry standard RS-485 signaling for communications.



Easy Management and Monitoring

Software runs in the cloud for easy, secure access and remote monitoring, without the need for local servers. Built-in diagnostics and real-time troubleshooting insights streamline management.



Flexible Install Options

The Single Door Controller can be wall mounted or installed on a single or double gang box and powered using PoE, PoE+ or an external 12V to 24V supply, making it easy to install almost anywhere.



Lifetime Limited Warranty

Ensure peace of mind, knowing that Avigilon stands behind its access control hardware with a lifetime limited warranty, guaranteeing the quality of your security solution.

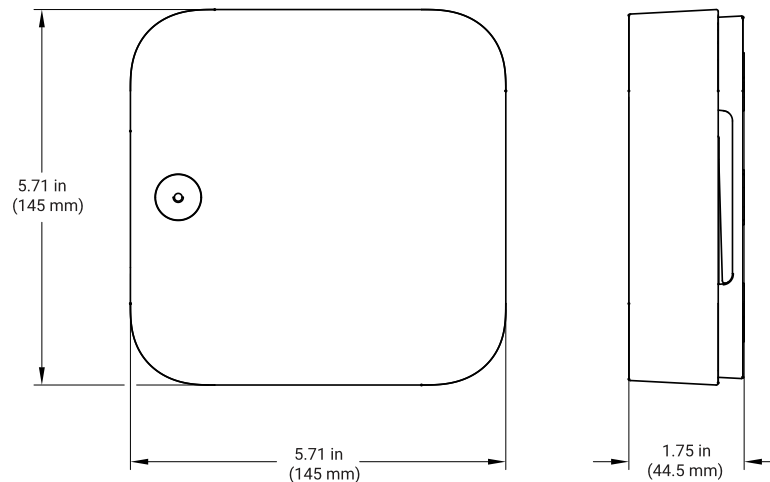
For more information, visit avigilon.com/access-control/sdc.

Specifications

System	
Access Control	Up to 2 entries and 2 Avigilon Smart Readers
Relays	2 relays, 2A @ 24VDC (resistive)
Avigilon Readers	Up to 2 Avigilon Smart Readers
Wiegand Readers	Up to 2 Wiegand readers
REX Sensors	2 REX sensors, nominal 5VDC, 1kohm to each input (resistors built into controller)
Contact Sensors	2 contact sensors, nominal 5VDC, 1kohm to each input (resistors built into controller)
Tamper Sensor	Detects tamper events when front cover is removed
Backup Battery	May be added to PoE injector or optional external supply
Communications	10/100 baseT Ethernet port, or 2.4 GHz and 5 GHz WiFi, for connection to access control cloud service Encryption to access control cloud service uses TLS 1.2+ 2 USB ports for connections to credential readers RS-485 for connection to credential readers
Display	Port LED indicator: Avigilon Smart Reader in expected or error state; sensor in active state, or EOL shorted or cut; lock hardware including relay in energized or fault detected state Status LED indicator: Internet connection status, software update status, provisioning status in access control system

Mechanical

Dimensions



Weight	12.7 oz (360 g)
Mounting	Wall-mounted or installed on a single or double gang box
Wiring	Industry standard RS-485 signaling to communicate with readers over standard wiring Removable contact terminal blocks for convenient wiring Physical switches to select relays to be dry or wet (12V or 24V) EOL monitoring with single or double termination on all REX and Contact inputs



Electrical	
Supply Requirement	PoE, PoE+, or external 12-24VDC Note: When using an external supply, if 24V wet relay output is required a 24V external supply must be used. ⚠ Certified external power source (complies with LPS) must be used.
External Supply Rating	12V @ 2A min. or 24V @ 1A min.
Output Ratings	Power Out can supply up to 100mA @ 12V or 50mA @ 24V
	2 reader ports, max power output: 250mA @ 12V each
	2 relays, max power output: PoE: Max 3W combined output (250mA @ 12V, 125mA @ 24V) PoE+: Max 9W combined output (750mA @ 12V, 375mA @ 24V)
Environmental	
Operating Temperature	0°C to 50°C (32°F to 122°F)
Operating Humidity	5% to 85% relative, non-condensing
Certifications	
Product Certification	CE (Europe), IC (Canada), FCC (United States), NOM (Mexico), RCM (Australia, New Zealand), RoHS, UKCA (United Kingdom), UL 294*, UL2043 *Performance Levels: Attack Level 1, Endurance Level I, Line Security Level 1, Standby Power Level 1
Warranty	Lifetime Limited

Ordering Information

Part Number	Description
OP-CR-SDC	Avigilon Single Door Controller with support for 2 entries, 2 reader inputs, 2 Wiegand inputs, 2 REX sensors, 2 contacts, 2 output relays

Support

For more information, visit [avigilon.com](https://www.avigilon.com) or sales@avigilon.com for product support.